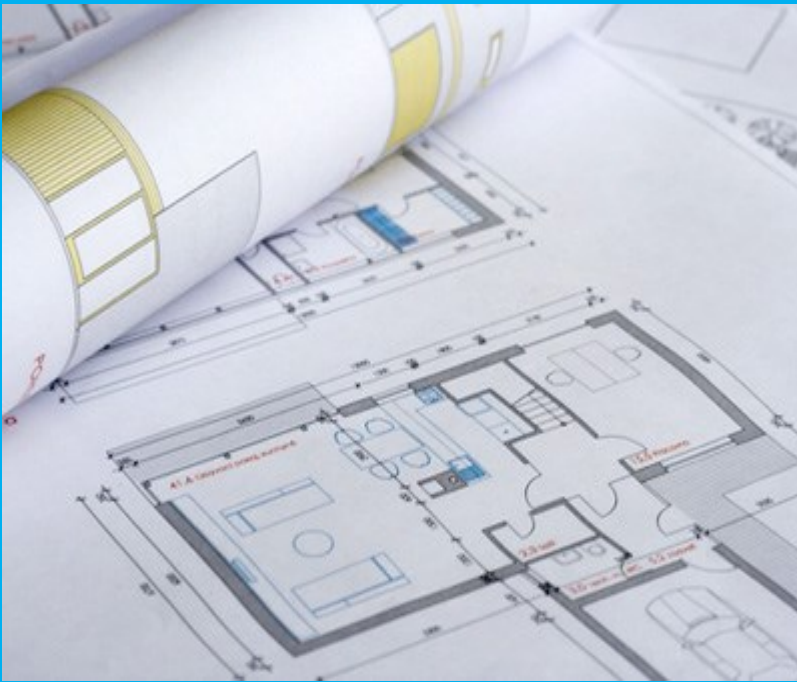


Architects & Specifiers



BEP Blue Barrier provides a cohesive family of products specially designed to protect the building envelope and all critical points of entry such as windows and doors.

This next generation STPE technology is unmatched in solving water intrusion, air infiltration and mold development concerns.



Total Building Envelope Protection

Professional grade BEP Blue Barrier air and moisture protection products provide long lasting, worry free building envelope protection. Backed by a limited 10-year product warranty, all BEP products are formulated from a proprietary Modified Silyl Terminated Polyether (STPE) technology combining the best characteristics of silicones and polyurethanes in a single stage liquid applied family of products.

Compatible with a vast array of substrates, BEP Blue Barrier products can be applied on dry or wet surfaces. Blue Barrier creates a permeable, seamless, continuous, energy efficient building protection membrane that meets or exceeds all building air and moisture barrier standards and code requirements.

To Learn More About BEP Blue Barrier Products
Visit www.BEPproducts.com or Call 813.279.1902

Total Building Envelope Air & Moisture Protection

One Technology ... Four Compatible Products ... One System



Blue Barrier Liquid Flashing 2100

An all-purpose, liquid applied flashing used to bridge dissimilar construction materials and to create fully adhered pan membranes in window and door installations.



Blue Barrier Joint Filler 2200

A structural adhesive and detail sealant used to fill voids and seams and to bond dissimilar construction materials.



Blue Barrier Liquid Wrap 2300

A thin mil, spray applied, fully adhered, permeable air and moisture building envelope protection membrane used on vertical wall substrates.



Blue Barrier Flash'N Wrap RG 2400

A roller applied liquid membrane for flashing applications bridging dissimilar materials, creating seamless pan membranes in window & door installations and for vertical wall substrate air and moisture protection coatings.

Product Technical Data

Typical Properties (Cured properties at 21 days)

Blue Barrier - 2100 - Elongation	300%
Blue Barrier - 2100 - Tensile Strength	290 PSI
Blue Barrier - 2200 - Hardness Shore A	70
Blue Barrier - 2200 - Peel Strength	59 PLI
Blue Barrier - 2300 - Perm Rating	24 Perms
Blue Barrier - 2300 - VOC Content	0g/liter
Blue Barrier - 2400 - Tensile Strength	329 PSI
Blue barrier - 2400 - Tear Strength	45 PSI
Blue Barrier - All - UV Exposure	9 Months
Blue Barrier - All - Cure Rate	1/8" - 16 hrs.

For more detailed information and complete technical specifications for each BEP Blue Barrier product please refer to the individual product **Technical Data Sheets** and **Material Safety Data Sheets** available online at www.BEPproducts.com/resources

This website is also your source for:

- Architect Specification Sheets
- Blue Barrier Installation and Application Guides
- BEP White Papers
- Blue Barrier Application Briefs
- BEP Product Brochures
- Application Images

Industry Leading Features

- Single Stage (No Mixing, No Primers)
- STPE Technology
- Superior Adhesion
- Wet and Dry Surface Application
- Exceptional Abrasion and Tear Resistance
- Permeable / Self Healing Technology
- Quick Cure Rate (Paint in 2 Hours)
- Excellent Wear and Crack Bridging
- Environmentally Friendly - Low VOC
- Mold Resistant Formula
- Easy to Apply - Brush, Spread, Gun, Roll or Spray
- Complete Liquid Applied System- No Tapes, Scrim or Fabrics
- Standards / Code Compliant
- Limited 10-Year Product Warranty

Suitable Substrates

- ◆ Concrete
- ◆ Aluminum
- ◆ Pressure Treated Wood
- ◆ Masonry
- ◆ DensGlass
- ◆ Galvanized Metals
- ◆ Steel
- ◆ Wood

(All surfaces should be clean and prepared according to the BEP Blue Barrier Installation and Application Guides)

Standards Compliance

- ASTM E331 - Wall Assembly Water Penetration Resistance
- ASTM 2178 - Air Penetration Resistance
- ASTM E2357 - Wall Assembly Air Penetration Resistance
- ASTM E283 - Wall Assembly Air Penetration Resistance
- ASTM E96 - (Procedure A) - Water Vapor
- ASTM D903 - Peel Strength
- ASTM D412 - Tensile Strength / Elongation
- ASTM C661 - Shore Hardness
- ASTM D2240 - Hardness
- ASTM D2370 - Tensile Strength
- ASTM E84 - Surface Burning (Flame spread & smoke index) Class A
- AAMA 501.2 - Water Infiltration

(Refer to the individual BEP Blue Barrier Technical Data Sheets for applicable Standards Compliance by product)



DOMINUS INNOVATIONS

Improving The Future Through Innovation